

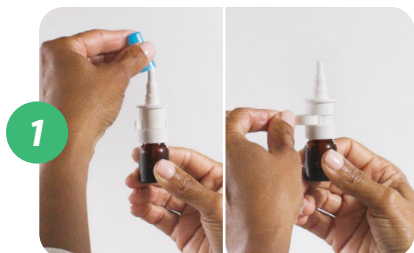
# Forget what you know about other nasal sprays. Learn the Tyrvaya<sup>®</sup> way to spray.

Please be sure to read the accompanying Patient Information and Instructions for Use before you start using Tyrvaya and each time you get a refill, as there may be new information. If you have any questions, be sure to talk to your eye doctor. **Tyrvaya is for use in the nose. Do not shake the bottles.**



## Before use

Before using a new bottle of Tyrvaya, you'll need to prime it. Priming means getting the nasal spray bottle ready to use for the first time. Please note: Your bottle might look slightly different than the bottle in the guide below.



**1** Remove the bottle's cap and clip. Do not throw them away – you'll put them back on after each use.



**2** Hold Tyrvaya upright and away from your face. Place one finger on each side of the base of the nasal spray applicator, and place your thumb underneath the bottle.



**3** Fully press and release the nasal applicator 7 times with your thumb and fingers. You may feel some resistance but be sure to press all the way down. You may not see a spray released each time you press and release the nasal applicator. You should see a spray by the 7th time you press and release. Spray away from yourself and others. Tyrvaya is now primed for use.

If you haven't used Tyrvaya for more than **5 days**, you'll need to re-prime the nasal spray bottle with **1 spray** before use. **Avoid priming Tyrvaya more than needed**, as it will reduce the amount of medicine in the nasal spray bottle.

## WHAT IS TYRVAYA<sup>®</sup> (VARENICLINE SOLUTION)?

Tyrvaya is a prescription nasal spray used to treat the signs and symptoms of dry eye disease.

## IMPORTANT SAFETY INFORMATION

### What are the possible side effects of Tyrvaya?

The most common side effects of Tyrvaya include sneezing, cough, and throat and nose irritation.

## Important information you need to know before using Tyrvaya

Tyrvaya is for use in the nose.

Do not shake the bottles.

You are encouraged to report negative side effects of prescription drugs to the FDA. Visit [www.fda.gov/medwatch](http://www.fda.gov/medwatch), or call 1-800-FDA-1088.

For additional safety information, click here for the full [Prescribing Information](#) and the [Instructions for Use](#) and discuss with your doctor.



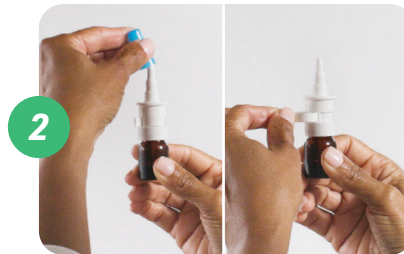
## Using Tyrvaya® (varenicline solution) Nasal Spray

Use one spray of Tyrvaya in each nostril, twice per day, about 12 hours apart. **Repeat steps 1-8 each time you use Tyrvaya.** If you miss a dose of Tyrvaya, skip that dose and take your next dose at your regular scheduled time. Do not take an extra dose to make up for a missed dose.



1

**Blow your nose** to clear your nostrils, if needed.



2

If the cap and clip are on your bottle, **remove them**. **Do not** throw them away.



3

**Hold Tyrvaya upright.** Place one finger on each side of the base of the nasal spray applicator, and place your thumb underneath the bottle.



4

**Tilt your head** back slightly without lying down.



5

**Insert the nasal spray just past the nasal opening.** Aim the tip out towards your ear on the same side you're spraying into. **Do not** press the tip against the wall of your nose. **Do not spray too deep, and avoid spraying into your sinuses.**



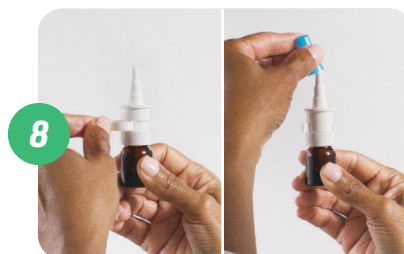
6

**Place your tongue to the roof of your mouth and breathe gently** as you **fully** press and release the applicator **1 time**, just misting the inside of your nostril. **Avoid inhaling deeply.** Repeat steps 5 and 6 to deliver a second spray in the other nostril. The medication will absorb into the wall of the nose, where the nerve you are aiming for is located.



7

**Wipe the nasal applicator** with a clean tissue.



8

**Put the clip and cap back on** the nasal spray bottle.

VISIT  
TYRVAYA.COM TO SEE  
AN INSTRUCTIONAL VIDEO.